

## Frequently Asked Questions (FAQs)

### 1. What does it mean by “Bike Orienteering”?

Participants need to travel around the event area on mountain bikes using maps as guidance. The aim is to visit as many checkpoints possible within 5 hour time limit. At each checkpoint, participants will stamp their individual passport using the special orienteering punchers stationed there.

Participants will be issued (1) event map and (2) personal passport during the morning of event.

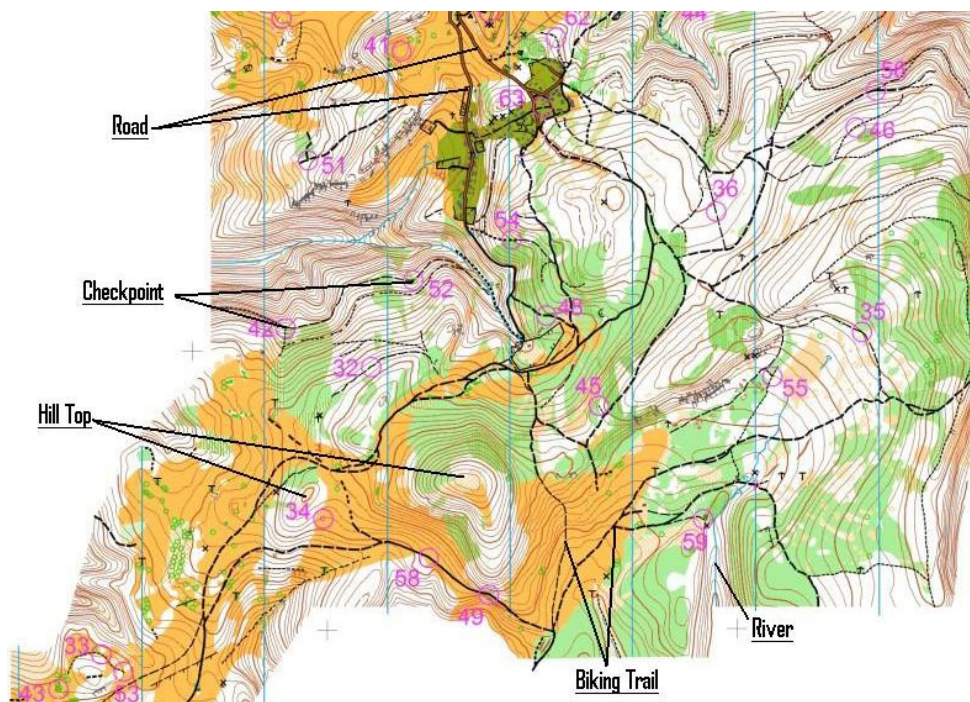
### 2. What is the difference between “Bike Orienteering” and normal bike events?

“Bike Orienteering” event areas are usually too large for all checkpoints to be visited within time limit. As such, participants have the freedom to select for themselves how many checkpoints to visit and their order. Therefore there is no pre-determined course to be followed. Participants thus enjoy a variety of riding levels based on route taken and also the opportunity to avoid bottlenecks due to only 1 riding course for normal biking events.

As this concept is still new in Malaysia, the GPS event will outline recommended biking tracks that participants can choose to follow to reach the various checkpoints. Nevertheless, participants are allowed the freedom to use other routes available to reach the checkpoints.

### 3. Do I need special skills at map reading?

For event, all participants will receive a topo map where checkpoints are circled and recommended biking tracks are indicated in dotted lines. Please refer to below for sample of event map.



Basically one needs to only understand basic topo symbols such as rivers, roads and railway lines and contour lines to identify hilly grounds and its steepness.

#### **4. Do I need a compass?**

Bringing a compass along is not mandatory, but recommended. Many people never use a compass for similar events, and rely instead on their personal ability to keep track of their location on the map.

However, a compass is advisable during event day. Especially when you find yourself “lost” when alone or heavy rain. Plenty of people actually wear mini wrist-worn compass that can be easily consulted without having to stop your bike.

#### **5. Can I bring along my GPS?**

Participants are allowed to bring their own GPS along for event. However, users may find it slow as most GPS receivers require users to be stationary to use the system and may have to wait for some time for the GPS to lock onto a sufficient number of satellites to triangulate a fix.

#### **6. Where can I learn more about map reading and basic orienteering skills?**

For participants who require further assistance, Nomad Adventure will be organizing several clinics around Klang Valley and in Gopeng on Sat 14<sup>th</sup> Nov. Drop us a call or email [event@nomadadventure.com](mailto:event@nomadadventure.com) to book your space.

#### **7. What else do I need to bring along?**

We recommend for all participants to bring the following kit for event:-

- Bike Tool Kit
- Bike Pump
- Spare Tyre Tube
- Hydration Kit (min 2L)
- Compass
- Energy food
- Waterproof bags

In addition to the above, some stationary items would be helpful for making map reading easier. This include highlighter pens in various colours, self-adhesive clear covering film to laminate the event maps against rain and sweat and pens for making notes.

#### **8. What happens during event day?**

Arrive early and register as soon as organizer is ready. GPS registration shall begin from 7.30am at Earth Camp, Gopeng.

Participants will be issued their individual passport. Check your watch against the event official clock to avoid unnecessary penalty points for finishing late beyond 5 hour time limit.

Check out the orienteering markers & punchers that will be used during event so that you know exactly what to look out for.

Study the Master Event Maps that will be on display. Participants will only get their personal event map during Event Briefing at 8.30am.

### **9. What happens if I get lost during event?**

#1 – Remain calm, and start taking positive steps to relocate yourself

#2 – Stop, get off the bike and study the event map carefully. Compare map to terrain around you. If this doesn't help, then look out for last point on the map where you were certain of your position. Then project your route forward from that known position and see if you can correlate map features with physical features around you.

#3 – If you still can't locate your position, then reverse your route and attempt to return the way you came in order to arrive at one of the identifiable points passed earlier.

Nomad Adventure will have race marshals who will be patrolling event course on bikes and also stationed at certain checkpoints for your safety. You are also allowed to seek assistance from public to get your bearings back on track.

### **10. What happens when I finish?**

Participants need to report back to Finish desk within the 5 hour time limit. Please hand in your passport to the marshals who note down your riding time. This is crucial as your personal time taken will be important in the event of a tie in points collected.

Please report any missing checkpoint markers and problems encountered during the event e.g. misconducts by other participants or issues with trails.

You must also report to Finish desk even if you retire. As the organizer, Nomad Adventure values your safety and will ensure that everyone is accounted for. It is annoying and troublesome when search parties are sent out unnecessarily.